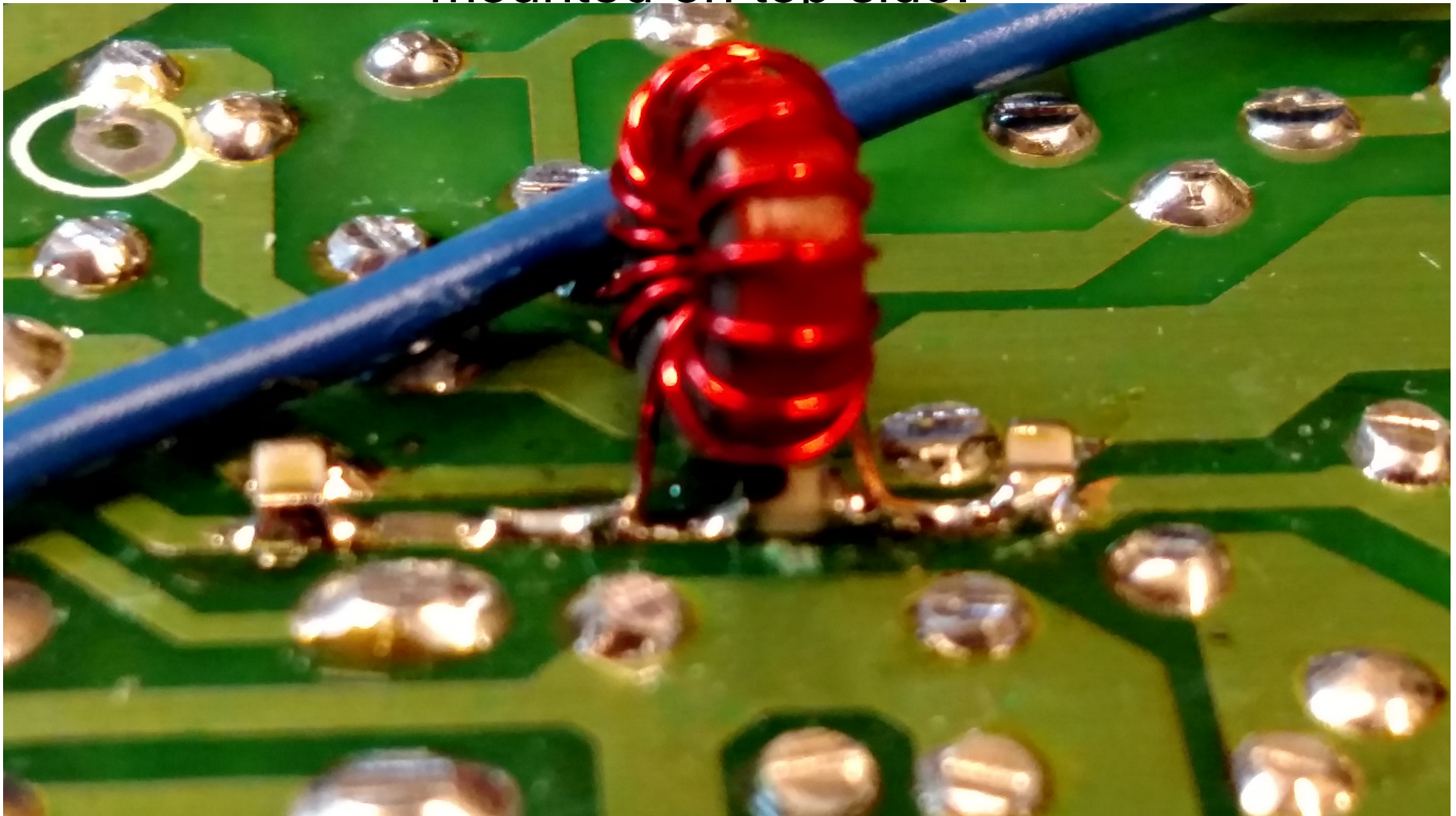
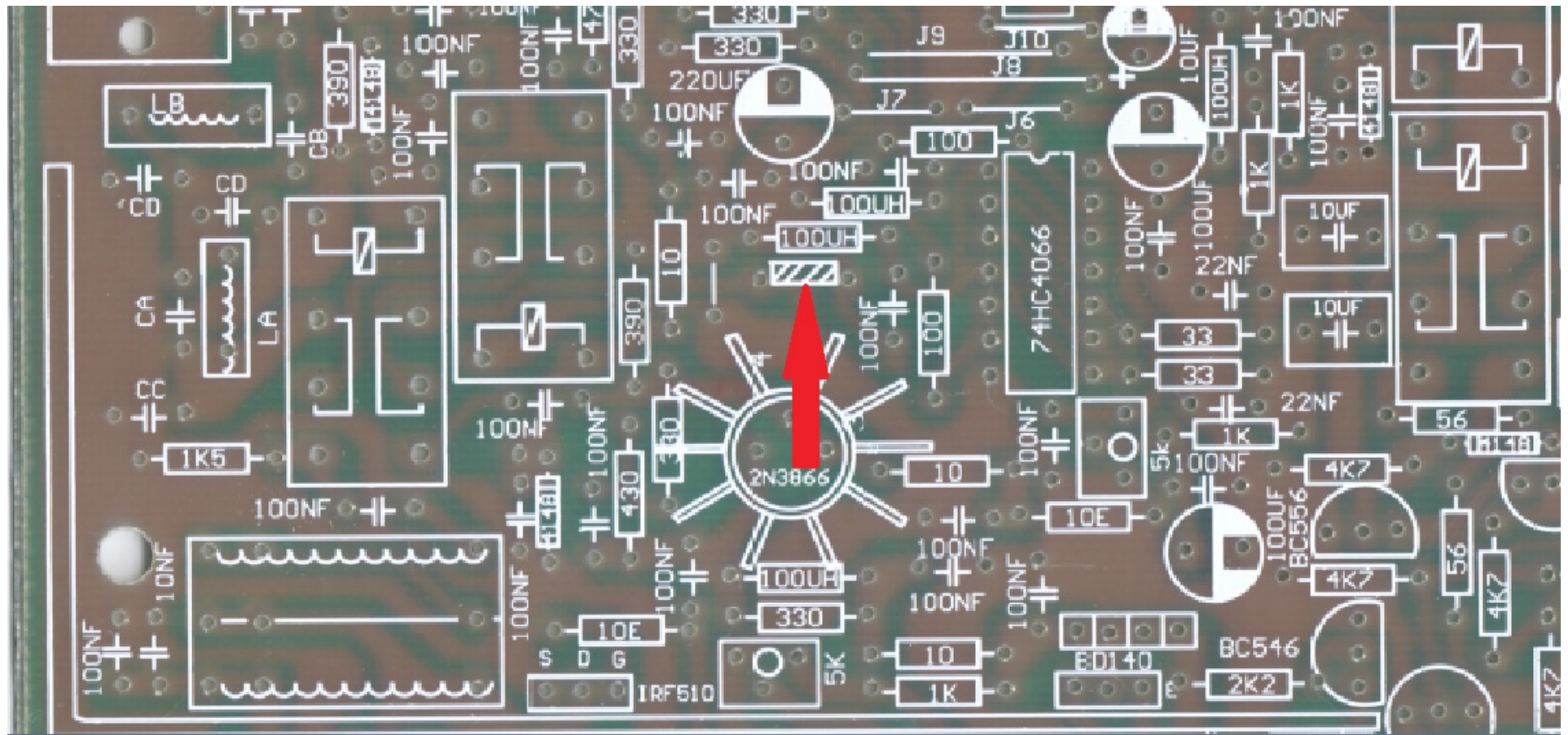


# Adding simple LPF to mixer

Note: This picture was on older release PCB. New PCB has this filter included on PCB, see below. Toroid will be mounted on top side.



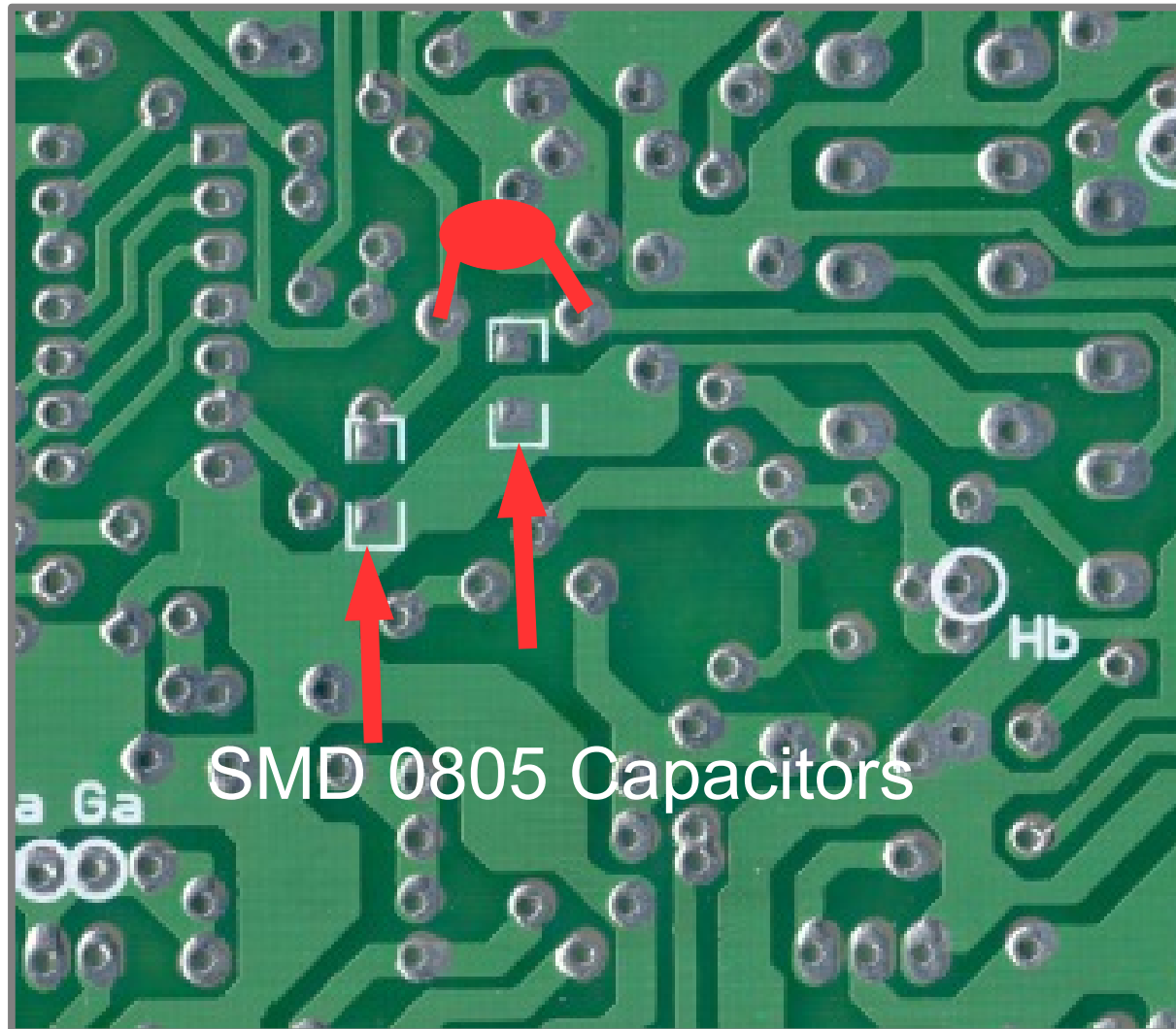
# New release PCB Has Mixer LPF





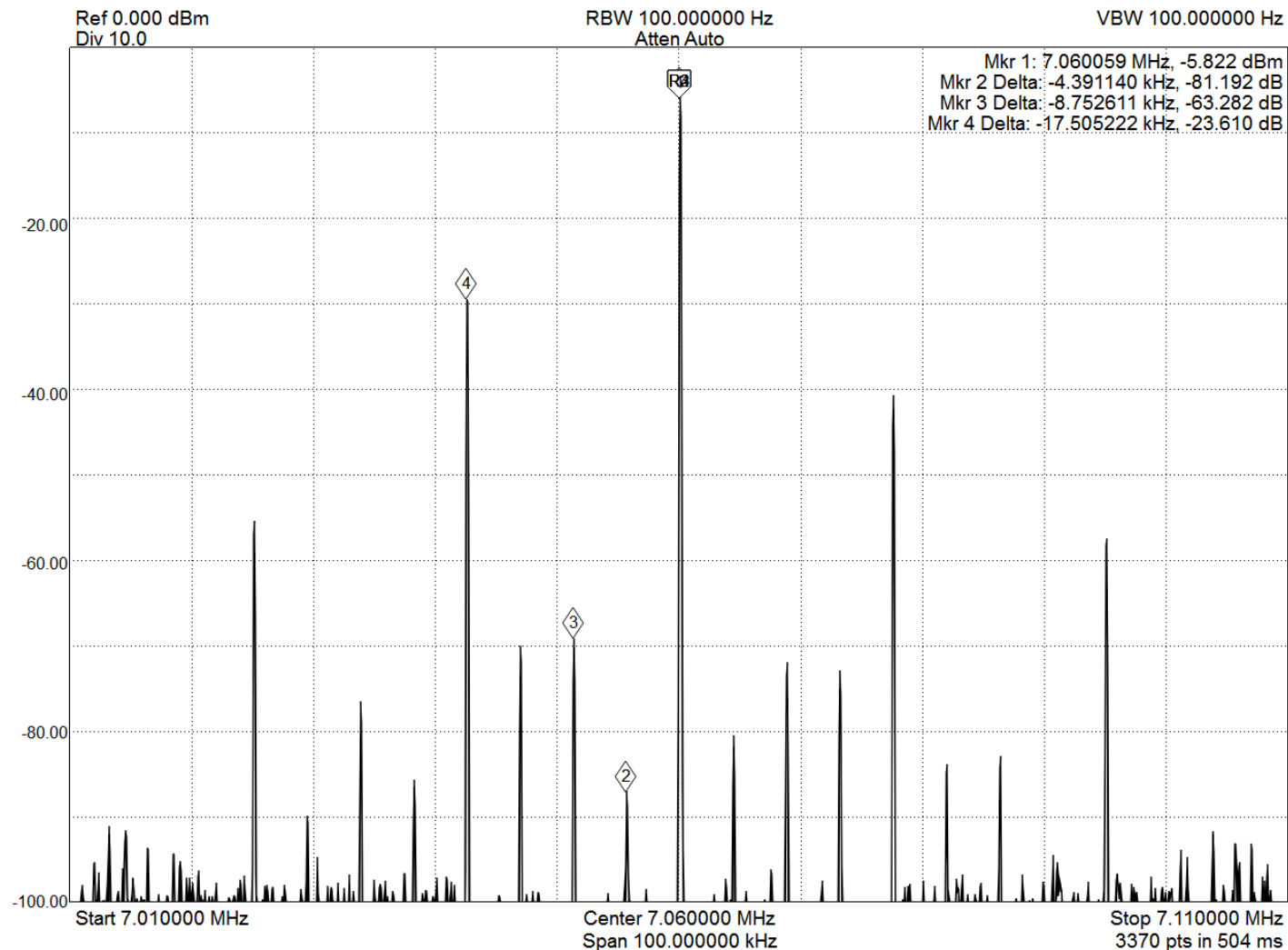
# PCB Bottom

Radial Capacitor added to bottom

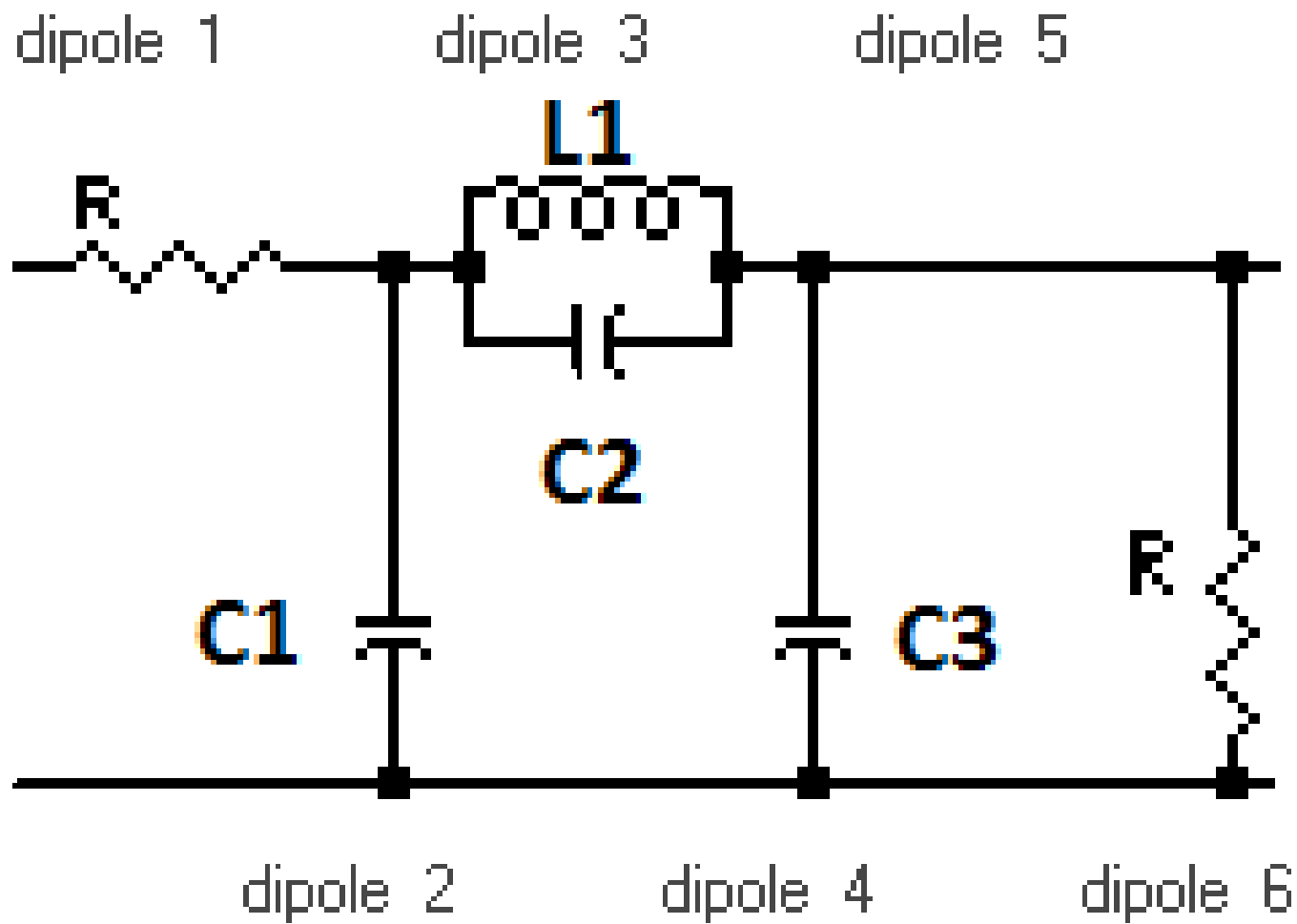


# No LPF

Marker 2 is LO SC; Marker 3 is TX Image; Marker 4 is the problem

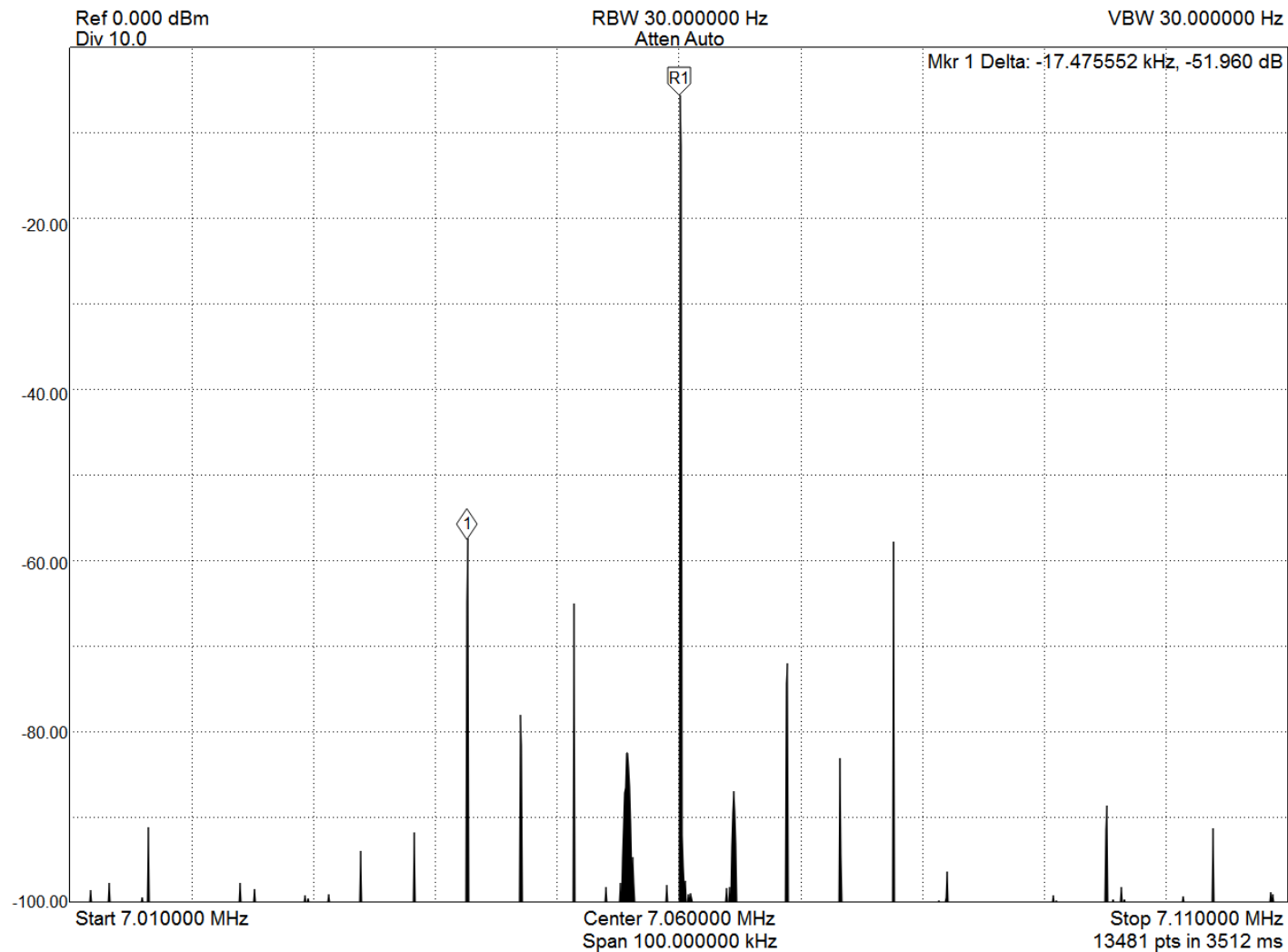


# LPF

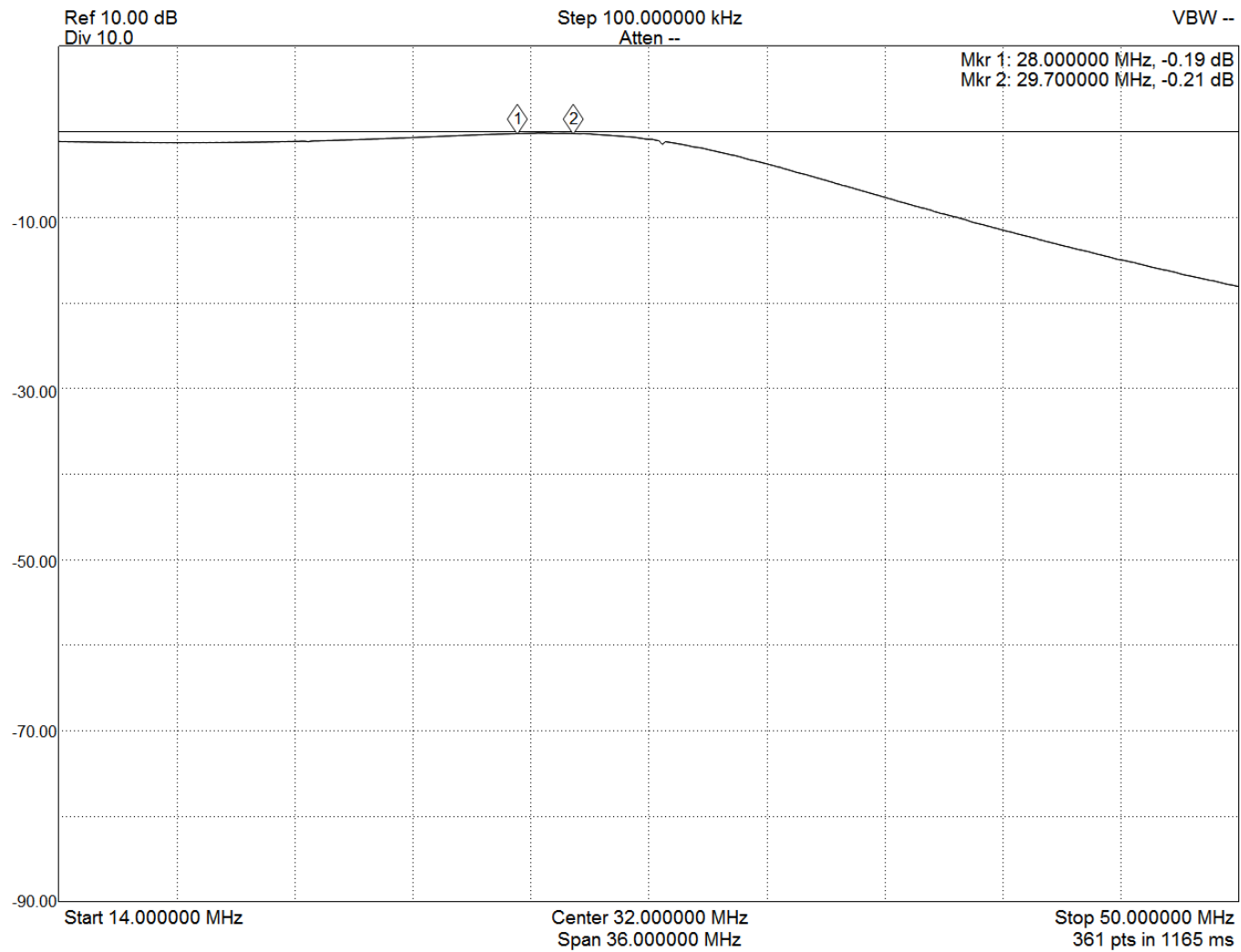


# With LPF

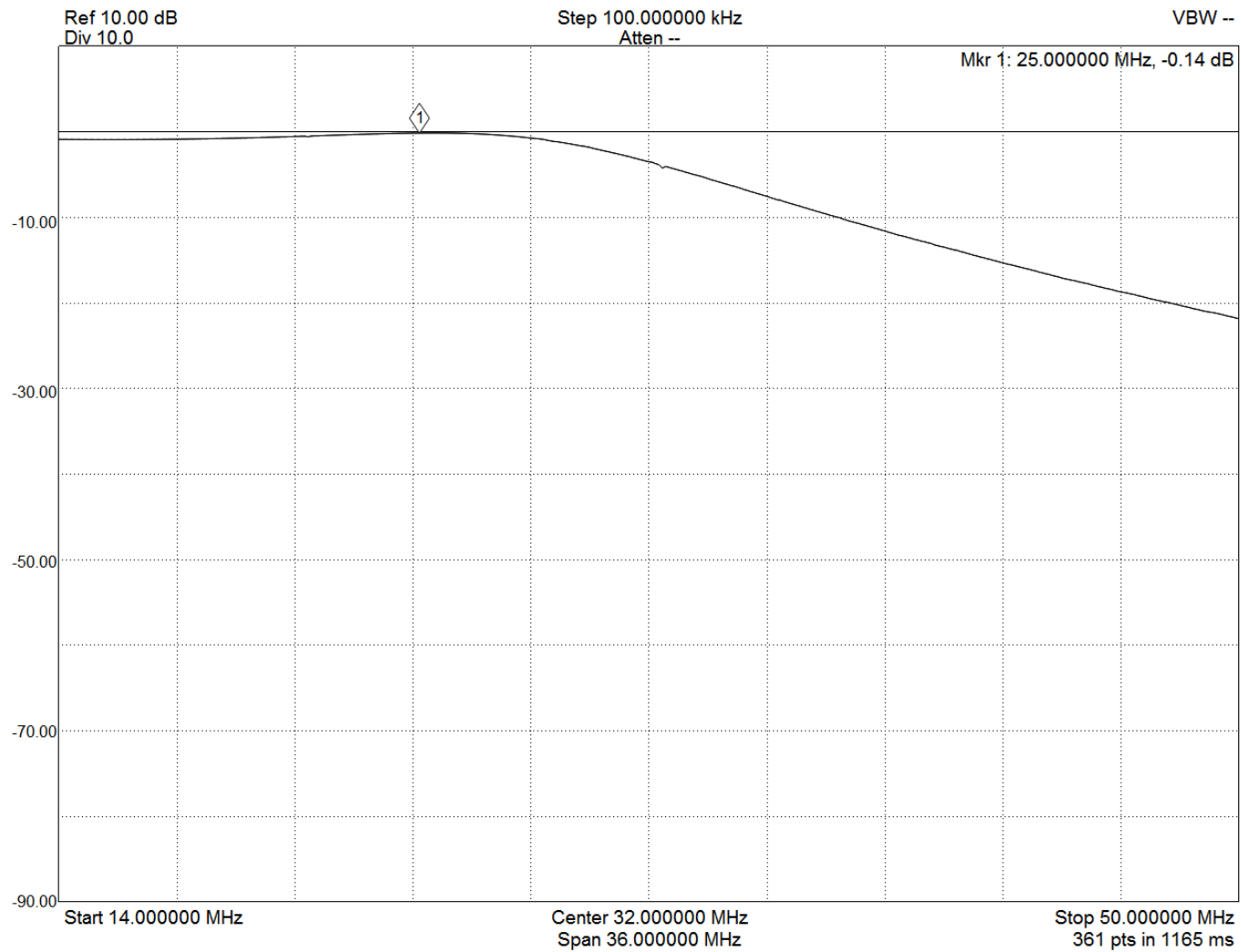
## Problem fixed :)



# 10M

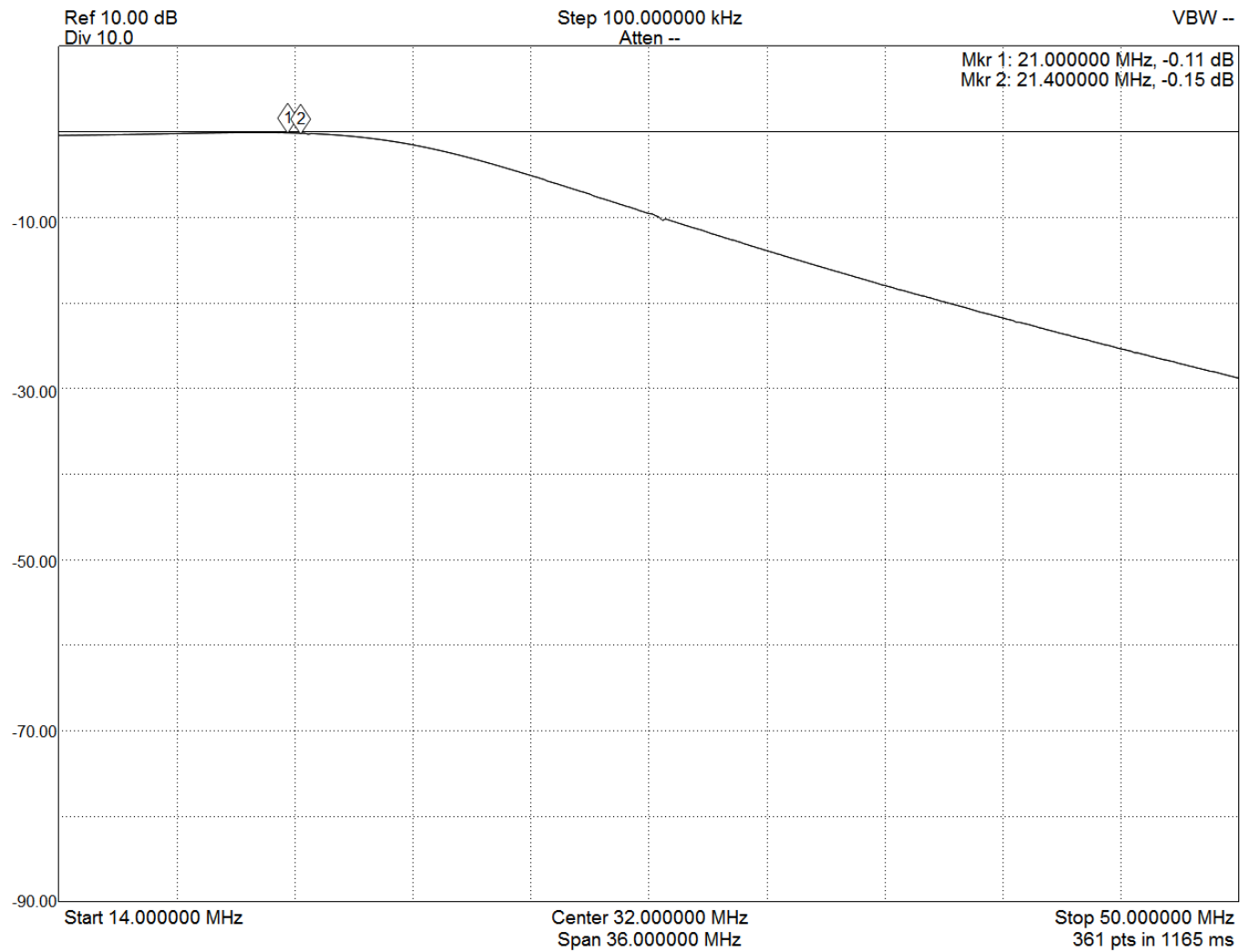


# 12M

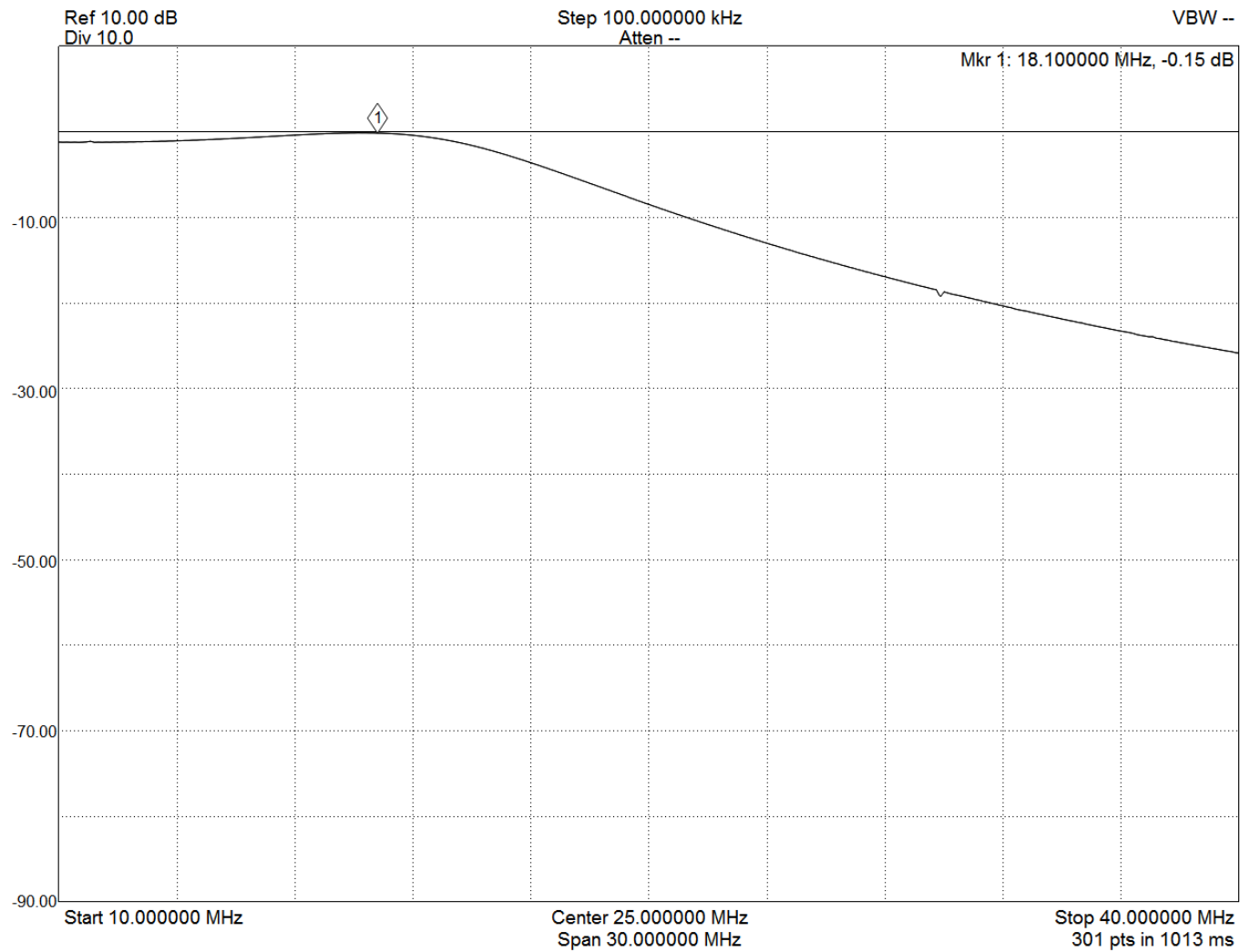




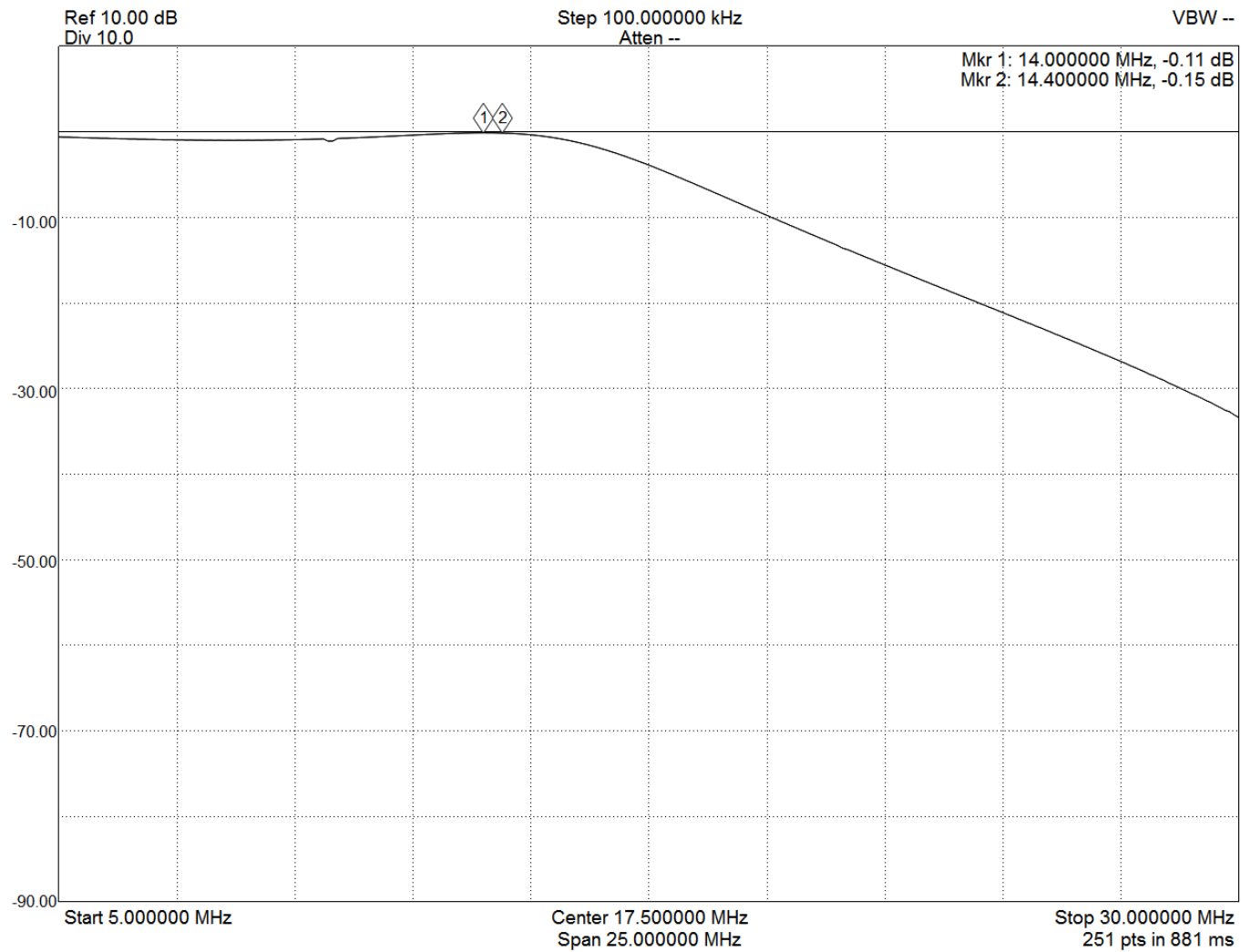
# 15M



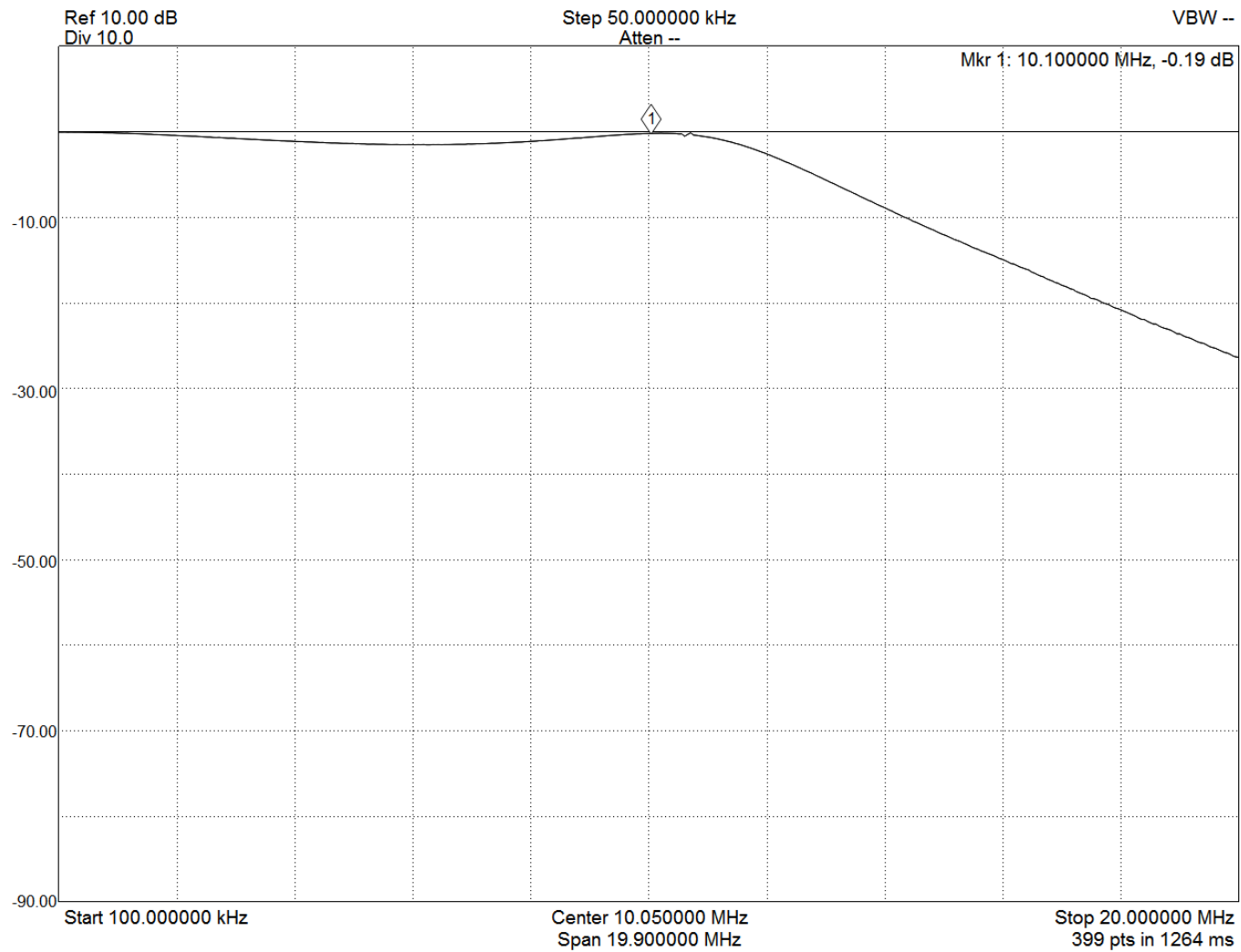
# 17M



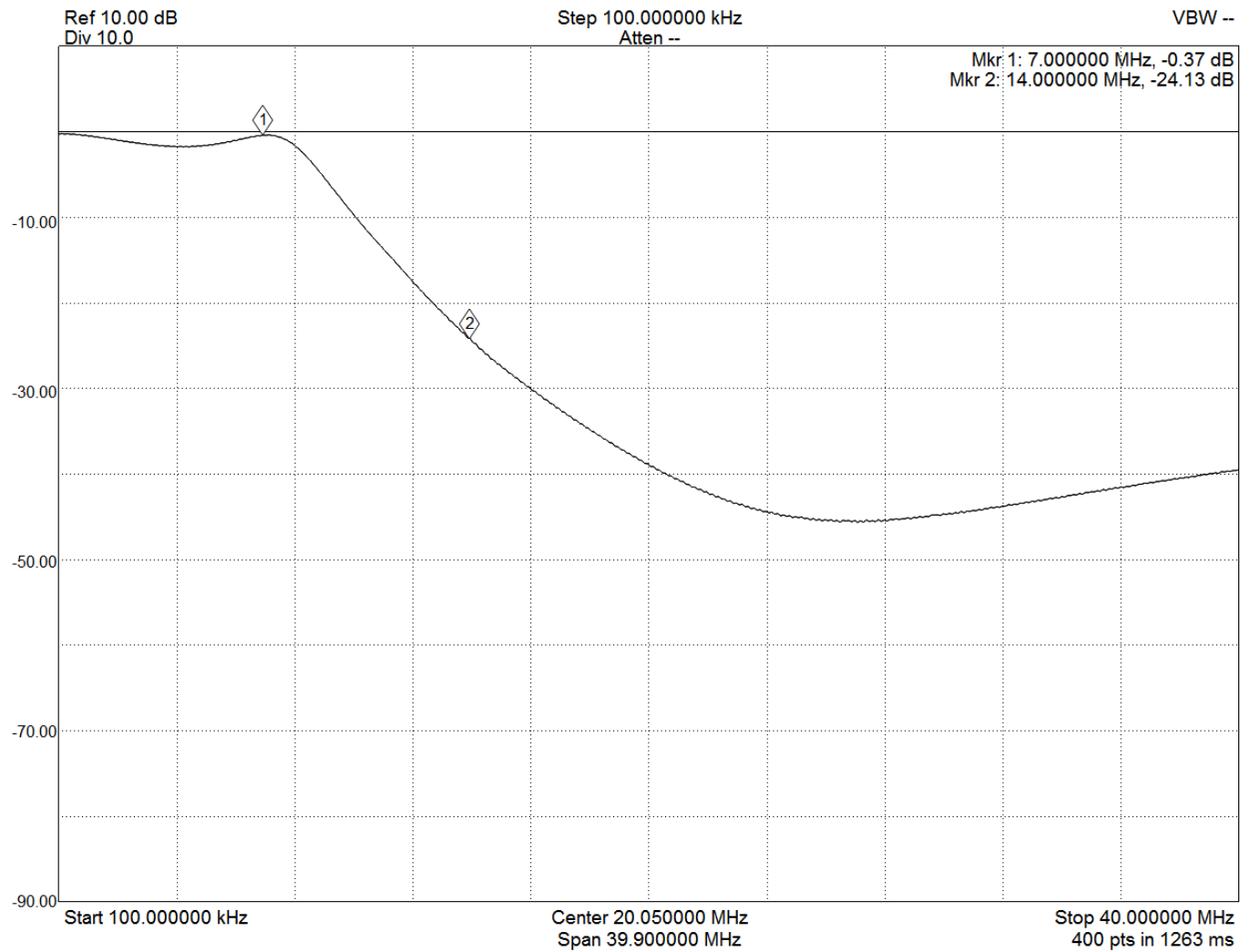
# 20M



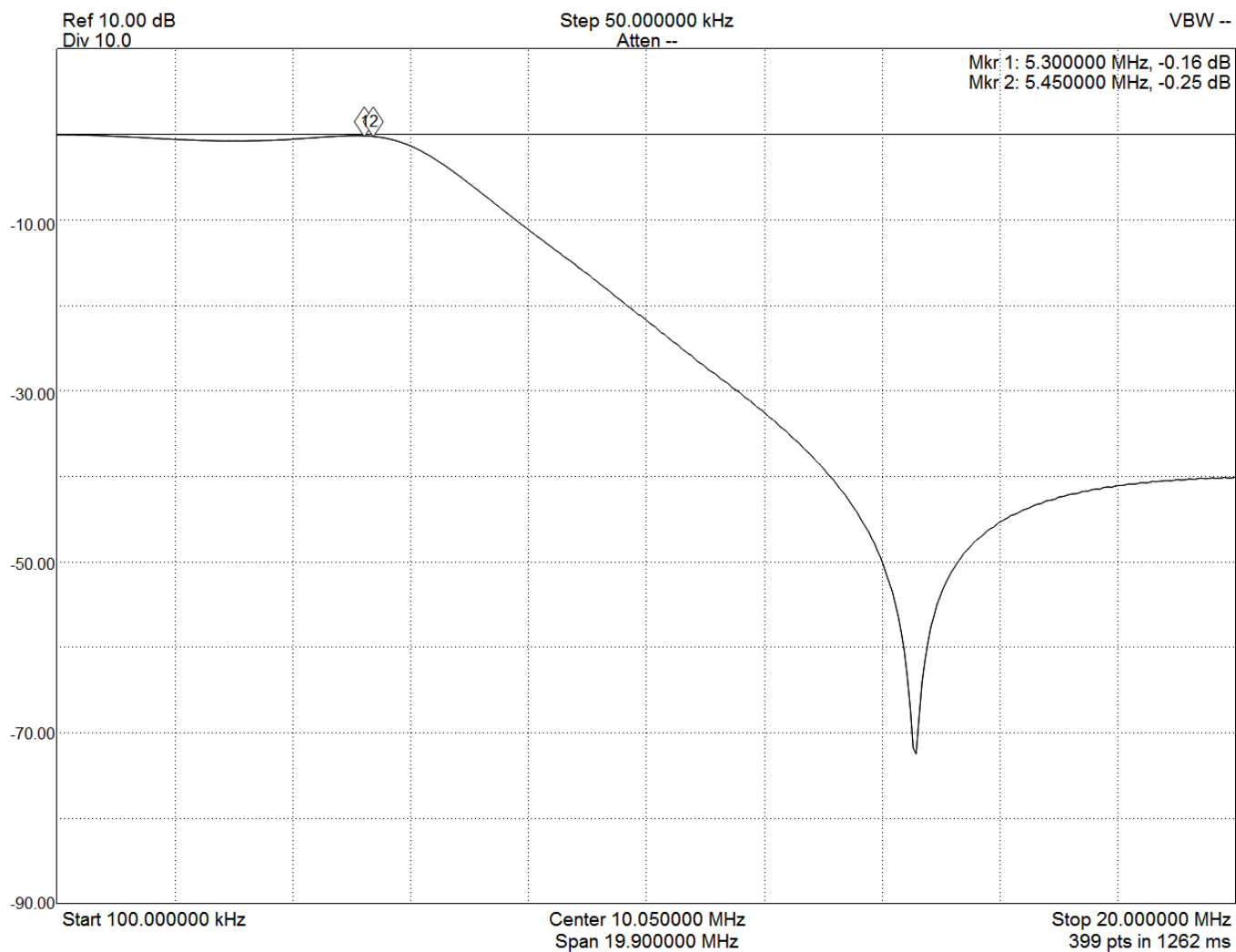
# 30M



# 40M

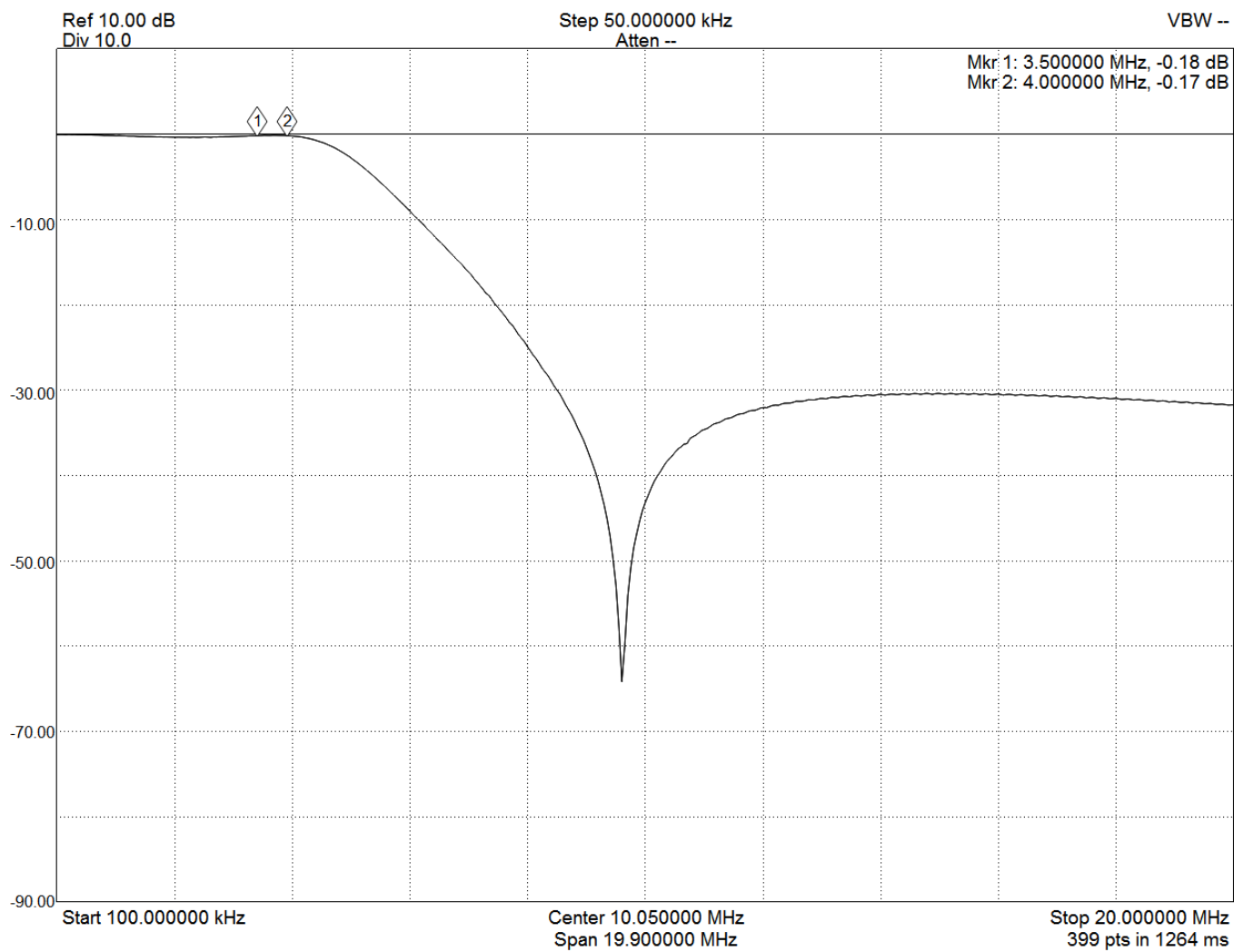


# 60M





# 80M



# 160M

